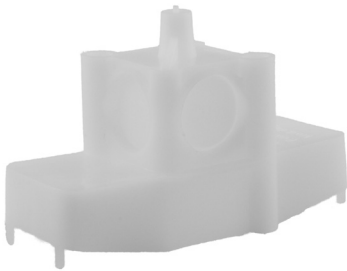


Lamp dowels 1022 - 1024



165 920 047 - 1022

The tried and tested lamp dowels

Their robust design makes the dowels ideal for concrete construction.

The pipes can be straightforwardly inserted above the reinforcement steel.

1022 is suitable for light tubes or smaller lamps.

The lamp fixing is installed in the lamp dowel 1024. They are suitable for larger or heavy lamps.

Pipe feedthroughs

The lamp dowels have easy-to-cut pipe feedthroughs.

Glow wire testing

All boxes meet the glow wire test (GWT) up to 650°C according to EN 60670.

They are thus suitable for concrete and masonry.

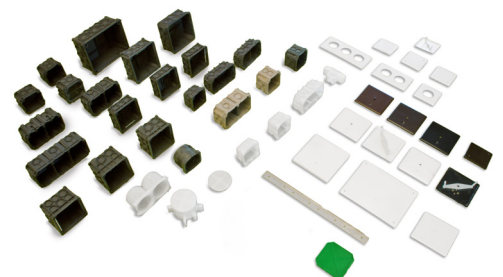
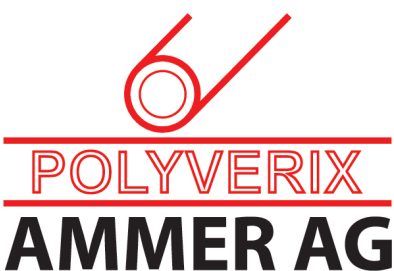
Colour, material

White, HDPE (halogen-free).



165 920 147 - 1024

Item No.	Ammer No.	Units	Description	Dimensions (mm, LxWxD)	Feedthroughs
165 920 047	1022	100	Lamp dowels	90 x 40 x 60	4x ø20
165 920 147	1024	48	Lamp dowels	75 x 75	4x ø20 / 2x ø25



Glattalstrasse 525 · CH-8153 Rümlang · Tel +41 44 817 24 10 · info@ammer.ch · www.ammer.ch

Ammer AG is a member of the POLYVERIX Group www.polyverix.ch