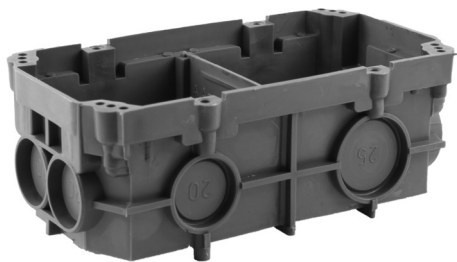


Pattress boxes 5003 - 5004 - 5076

The original ...
... since 1966 - for installation in combustible walls and cavity walls



372 201 457 - 5003



372 204 457 - 5004



372 501 647 - 5076

The tried and tested pattress box for every type of wall

Their robust design makes the boxes ideal for concrete construction.

The boxes have a low installation depth and no corner fasteners. As such, they are well suited for prefabricated construction elements or very thin walls.

The NIS box is ideally suited for quick and easy installation, e.g. of WLAN modules.

Pipe feedthroughs

The boxes feature several M20 and M25 pipe feedthroughs on each side.

The covers can be easily removed using light pressure or with a tool.

The pipe feedthroughs have a small groove that fastens to the corrugated tube.

Dividers

The double boxes feature a divider that makes the box extremely dimensionally stable. This is important in particular for concrete construction.

Glow wire testing

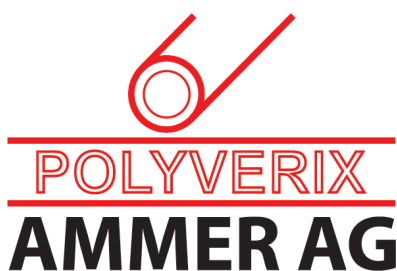
All boxes meet the glow wire test (GWT) up to 850°C according to EN 60670.

They are thus suitable for concrete, masonry as well as wooden and hollow walls.

Colour, material

Dark grey, HDPE (halogen free), flame retardant.

Item No.	Ammer No.	Units	Description	Dimensions (mm, LxWxD)	Feedthroughs	Size
372 201 457	5003	100	Pattress box single, GWT 850°C	60 x 60 x 45	8x ø20 / 3x ø25	1x1
372 204 457	5004	50	Pattress box double, GWT 850°C	120 x 60 x 45	6x ø20 / 3x ø25	2x1
372 501 647	5076	80	NIS box, GDP 850°C	60 x 53	6x ø20 / 1x ø25	1x1



Glattalstrasse 525 · CH-8153 Rümlang · Tel +41 44 817 24 10 · info@ammer.ch · www.ammer.ch

Ammer AG is a member of the POLYVERIX Group www.polyverix.ch