

Threaded rods and cable glands



121 102 409
121 102 509
121 102 519
121 102 609
121 102 619

Threaded rods

The cover plate 1017 can be connected to the composite can 1012/1013/1014 or 1015 using the threaded rods and the counter nut.

The required length depends on the thickness of the plaster and the depth of the installation.

Cable glands

Our brass cable glands fulfil the highest demands and all common standards.

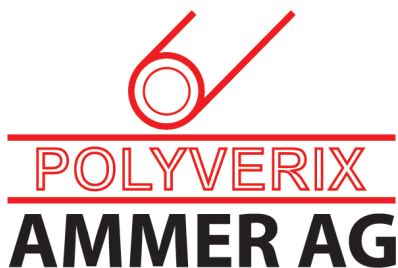
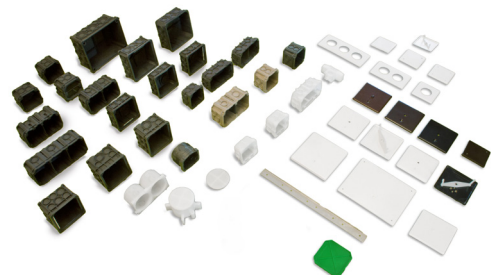
The models shown only represent a small selection; we can offer all standard fittings and special models on request.



155 990 047 - 1032
155 990 147 - 1033
155 990 347 - 1034
155 990 547 - 1035
155 990 247 - 1036
155 990 447 - 1037

Item No	Ammer No	Units	Description
155 990 047	1032	100	Thread Rod M3 x 42
155 990 147	1033	100	Thread Rod M3 x 52
155 990 347	1034	100	Thread Rod M3 x 76
155 990 547	1035	100	Thread Rod M3 x 100
155 990 247	1036	100	Thread Rod M3 x 66
155 990 447	1037	100	Thread Rod M3 x 86

Item No	Units	Description
121 102 409	100	Cable Gland M12 / 5-7 mm
121 102 509	100	Cable Gland M16 / 8-10 mm
121 102 519	100	Cable Gland M16 / 5-10 mm
121 102 609	100	Cable Gland M20 / 12-14 mm
102 102 619	100	Cable Gland M20/ 9-14 mm



Glattalstrasse 525 · CH-8153 Rümlang · Tel +41 44 817 24 10 · info@ammer.ch · www.ammer.ch

Ammer AG is a member of the POLYVERIX Group www.polyverix.ch